



Gaining Competitive Advantage with GenAI Integration

About Our Company



CrossML was founded in 2019 with a clear mission: Helping Businesses build value-centric solutions for a better future by enabling AI and Cloud. Our vision is to Build a People-Centric Organisation where employees love to work and customers love to get work done. Our core values of a people-first approach, better every day, sustainable growth, and customer obsession help us achieve both our mission and vision.



Our culture at CrossML is a dynamic world where work transforms into a vibrant lifestyle. We embrace innovation, collaboration, and a thriving community, creating an atmosphere where each day unfolds with extraordinary experiences.

Table of Content

Introduction	01
Understanding GenAI	02
Gaining Competitive Advantage With GenAI Integration	05
The Strategic Impact	06
Navigating Through GenAI Integration	07
Benefits and Opportunities	08
Addressing Challenges and Risks	09
Adoption Strategy For GenAI Integration	10
Real-world Insights	11
Future Trends and Innovations	12
Conclusion	13
Appendix	14



Introduction

Overview

In today's fiercely competitive business landscape, staying ahead demands innovative strategies, and the integration of GenAI stands out as a promising strategy. GenAI represents a significant leap forward from traditional AI, imitating various human abilities like learning, reasoning, and adaptation. Its potential to process vast amounts of data and derive actionable insights offers unparalleled opportunities for organizations looking for a competitive edge. By embracing GenAI, businesses can revolutionize their operations, drive innovation, and navigate the complexities of the modern market landscape with agility and foresight.

As per the 2023 IDC GenAI ARC Survey, it has been estimated that around 83% of IT leaders have the belief that Generative AI models that use their own business data will give the organisation a significant competitive edge and advantage

The Power of GenAI

The Power of GenAI opens up a realm of possibilities for businesses across industries. By using its capabilities, organizations can transform processes, improve decision-making, and capitalize on emerging opportunities. GenAI's capacity to continuously learn and adapt helps businesses to anticipate market shifts, mitigate risks, and deliver personalized experiences to customers. By embracing GenAI, organizations can unlock new levels of efficiency, innovation, and competitiveness, positioning themselves as leaders in their respective fields.

Objectives of the Guide

The objectives of this handbook are multifaceted, aiming to equip readers with a comprehensive understanding of GenAI and its implications for business. It looks to provide actionable insights and strategies for effectively integrating GenAI into organizational processes to gain a competitive advantage. Furthermore, the guide aims to identify future trends and innovations in GenAI integration, helping organizations to stay ahead of the curve and maximize the potential of this transformative technology.

Understanding GenAI

GenAI's Core Principles

GenAI operates on a set of core principles that enable it to imitate human cognitive abilities and drive intelligent decision-making. At its core, GenAI uses advanced technologies such as neural networks, natural language processing (NLP), and deep learning algorithms.

Neural networks serve as the foundation of GenAI, imitating the structure and functionality of the human brain to process information and make decisions. NLP enables GenAI to understand and generate human language, helping in seamless user interaction and the interpretation of unstructured data. Deep learning algorithms use GenAI's ability to analyze vast amounts of data, recognize patterns, and derive insights, driving informed decision-making and predictive capabilities.

GenAI Integration Vs Traditional Integration Methods

GenAI Integration	Traditional Integration Methods
Employs advanced algorithms and machine learning to analyze vast amounts of data rapidly and make data-driven decisions with greater accuracy and efficiency.	Relies on manual analysis and human judgement, which can be time-consuming and subjective.
Facilitates agile innovation through rapid prototyping, predictive analytics, and automation, enabling organizations to identify and capitalize on new opportunities more effectively.	Innovation may be limited by human capabilities and expertise, resulting in incremental improvements rather than breakthrough innovations.
Enables highly personalized experiences for customers through AI-driven recommendation systems, tailored marketing campaigns, and dynamic pricing strategies, enhancing customer satisfaction and loyalty.	Offers limited customization and personalization options due to resource constraints and scalability issues.

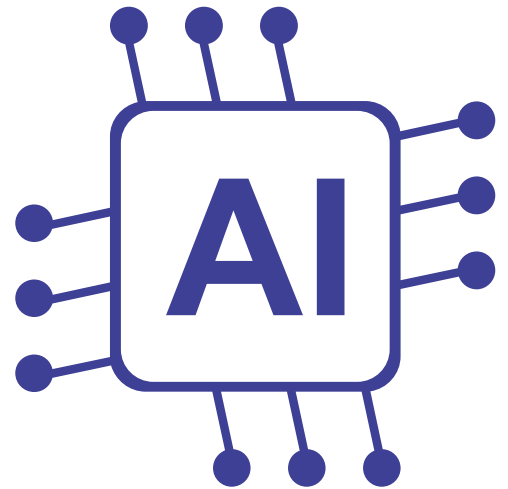
Evaluating ROI and Performance Metrics

Measuring the success of GenAI integration initiatives requires the identification and tracking of key performance metrics and return on investment (ROI).

Key metrics may include accuracy, precision, recall, and F1 score for AI models, reflecting their performance in tasks such as classification, prediction, and recommendation. ROI calculations consider the financial impact of GenAI integration, including cost savings, revenue generation, and operational efficiency gains.

Additionally, organizations may evaluate qualitative factors such as user satisfaction, employee productivity, and market competitiveness to assess the overall impact of GenAI integration on business outcomes.

By establishing clear metrics and benchmarks, organizations can track progress, optimize performance, and justify investments in GenAI integration.



Ethical Considerations and Responsible AI

The integration of GenAI raises complex ethical considerations that require careful considerations to ensure responsible AI practices.

One of the primary concerns is algorithmic bias, where AI systems perpetuate or amplify existing biases present in training data, leading to unfair or discriminatory outcomes. Organizations must prioritize fairness, transparency, and accountability in AI decision-making to mitigate bias and ensure equitable outcomes for all stakeholders.

Data privacy is another critical consideration, as GenAI relies on vast amounts of personal data that must be handled responsibly to protect individuals' privacy rights.

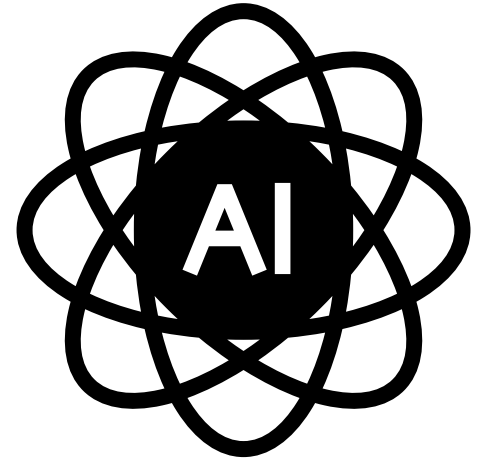
Additionally, GenAI's societal impact, including its effects on employment, inequality, and autonomy, requires thoughtful consideration and ethical frameworks to address potential risks and maximize benefits for society as a whole.

Regulatory Compliance and Legal Frameworks

GenAI integration is subject to various regulatory requirements and legal frameworks aimed at ensuring ethical, transparent, and responsible AI practices. Organizations must comply with data protection laws that govern the collection, use, and sharing of personal data.

Industry-specific regulations and standards may also apply, particularly in sectors such as healthcare, finance, and transportation, where GenAI integration has significant implications for safety, security, and privacy.

Additionally, emerging AI governance frameworks and guidelines, such as the OECD AI Principles and the EU Ethics Guidelines for Trustworthy AI, provide valuable guidance for organizations in the regulatory landscape and help them to uphold ethical standards in GenAI integration.



Building Organizational Capabilities

Building organizational capabilities is essential for successful GenAI integration, requiring investments in talent, technology, and infrastructure.

Organizations must attract and develop a diverse range of talent, including data scientists, AI engineers, and domain experts, to drive GenAI initiatives forward. Training and upskilling programs are critical for equipping employees with the necessary skills and knowledge to leverage GenAI effectively.

Additionally, organizations must invest in strong computing infrastructure, data storage, and cybersecurity measures to support GenAI systems' computational demands and security requirements.

Cultivating a culture of innovation, collaboration, and continuous learning is essential for fostering an environment where GenAI integration can thrive and deliver value across the organization.

Gaining Competitive Advantage With GenAI Integration

Gaining a competitive advantage with GenAI integration opens a new era in business strategy and operations. By using the transformative power of GenAI organizations can redefine their capabilities and market positioning. While the handbook provides comprehensive insights into various aspects of GenAI integration, there are additional dimensions that need to be considered.

At its core, GenAI integration represents a paradigm shift in how businesses use data, technology, and human expertise to drive innovation, efficiency, and strategic agility. Beyond the technicality of algorithms and models, GenAI integration necessitates a cultural shift within organizations, promoting a mindset of continuous learning, experimentation, and adaptation. This cultural transformation is essential for organizations to capitalize fully on the capabilities of GenAI and handle the complexities of the digital age effectively.

Furthermore, gaining a competitive advantage with GenAI integration requires a comprehensive approach that extends beyond the individual departments or functional areas. Collaboration and cross-functional alignment are important for ensuring that GenAI initiatives are aligned with strategic objectives, customer needs, and market dynamics. By promoting collaboration between data scientists, business analysts, and domain experts, organizations can drive innovation at scale.

Moreover, ethical considerations have a high impact in the era of GenAI integration, as organizations have to deal with questions of fairness, transparency, and accountability. Ensuring responsible AI practices and addressing concerns related to bias, privacy, and algorithmic transparency are extremely important for building trust and credibility with stakeholders.

The Strategic Impact



Integrating GenAI into strategic planning can reshape an organization's growth toward long-term success. Key considerations include:

Competitive Positioning: GenAI's capabilities offer strategies for differentiation, enabling organizations to make unique value propositions and gain a competitive edge in dynamic markets. By using GenAI for tailored customer experiences and predictive analytics, organizations can establish themselves as market leaders, driving customer loyalty and revenue growth.

Market Disruption: By strategically employing GenAI across business functions, organizations can identify and capitalize on opportunities for groundbreaking innovation, driving market evolution and staying ahead of industry trends. With GenAI, companies can anticipate shifts in consumer behaviour, optimize operations, and introduce innovative products and services that challenge existing market norms.

Partnerships and Ecosystems: Collaborating with AI startups, technology partners, and industry leaders allows organizations to tap into diverse expertise and resources, promoting innovation and accelerating GenAI integration for sustainable growth. By maintaining strategic partnerships, organizations can access cutting-edge GenAI technologies, expand their market reach, and co-create value-added solutions that address emerging market needs and trends. Additionally, such collaborations enable knowledge sharing and skill development, enhancing the organization's GenAI capabilities and competitive edge.

Navigating Through GenAI Integration

Navigating the complexities of GenAI integration requires a comprehensive approach that includes various dimensions:

Aligning with Business Objectives: Ensuring that GenAI initiatives are aligned with overall business goals and objectives is essential to drive strategic relevance and impact. By understanding business priorities, organizations can prioritize GenAI projects that deliver tangible value and contribute to long-term success. This alignment facilitates a clear understanding of how GenAI can address specific business challenges and opportunities, guiding decision-making and resource allocation accordingly.

Assessing Organizational Readiness: Conducting a thorough assessment of organizational readiness, including infrastructure, talent, and culture, is important to identify potential barriers and mitigation strategies. By evaluating readiness factors, organizations can address gaps and ensure a smooth GenAI integration process. This assessment provides insights into the organization's capacity to support GenAI initiatives, highlighting areas for improvement and investment to optimize the integration process and maximize outcomes.

Fostering Stakeholder Engagement: Engaging key stakeholders across departments and levels of the organization is essential to promote buy-in and collaboration, driving successful GenAI implementation. By involving stakeholders early and often, organizations can use diverse perspectives and expertise to ensure GenAI initiatives meet business needs and objectives. This engagement establishes a sense of ownership and commitment among stakeholders, promoting alignment and cooperation throughout the GenAI integration journey.

Benefits and Opportunities

The integration of GenAI presents numerous benefits and opportunities for organizations willing to embrace its potential

- **Enhanced Customer Experience:** Personalized recommendations, conversational interfaces, and AI-driven customer service can elevate the overall customer experience and satisfaction. By using GenAI, organizations can create seamless and personalized interactions with customers, building stronger relationships and increasing brand loyalty.
- **Cost Savings:** Automation of repetitive tasks and optimization of resource allocation can lead to significant cost savings and operational efficiencies. GenAI allows organizations to streamline processes, reduce manual intervention, and minimize errors, resulting in lower operational costs and improved profitability.
- **Market Differentiation:** Using GenAI capabilities to offer innovative products, services, and experiences can differentiate the organization from competitors and capture market share. By using the power of GenAI, organizations can create unique value propositions that resonate with customers, setting themselves apart in crowded markets and driving business growth.
- **Predictive Maintenance and Optimization:** GenAI enables predictive maintenance of equipment and assets, minimizing downtime, reducing maintenance costs, and maximizing asset utilization through proactive maintenance scheduling and optimization strategies.
- **Enhanced Risk Management:** GenAI facilitates advanced risk modelling, scenario analysis, and risk mitigation strategies, enabling organizations to proactively identify and mitigate risks, anticipate market shifts, and navigate uncertainties with confidence.
- **Augmented Human Capabilities:** GenAI augments human capabilities, empowering employees with AI-driven tools and insights to enhance their decision-making, creativity, and problem-solving abilities and promote a culture of innovation and continuous improvement.

Addressing Challenges and Risks

While the potential benefits of GenAI integration are compelling, organizations must also address inherent challenges and risks:

- **Change Management:** Overcoming resistance to change and cultural barriers within the organization is important in promoting a culture of innovation and adoption of GenAI technologies.
- **Regulatory Compliance:** Mitigating legal and reputational risks requires staying compliant with evolving regulatory requirements and standards related to AI governance, transparency, and accountability.
- **Data Governance and Sovereignty:** Managing data governance frameworks and navigating data sovereignty regulations are essential in ensuring data integrity, sovereignty, and compliance across jurisdictions.
- **Interoperability and Integration:** Overcoming interoperability challenges and integrating GenAI systems with existing infrastructure and legacy systems can pose significant technical hurdles and compatibility issues.
- **Resource Allocation and Costs:** Optimizing resource allocation and managing costs associated with GenAI implementation, including infrastructure, talent, and ongoing maintenance, requires careful planning and budgeting to avoid overspending and project delays.
- **Adaptability and Scalability:** Ensuring GenAI systems' adaptability and scalability to accommodate evolving business needs, technological advancements, and scaling requirements is crucial for long-term viability and success.





Adoption Strategy For GenAI Integration

Building a successful strategy for integrating GenAI requires careful planning and execution:

- **Visionary Leadership and Alignment:** Establish a visionary direction for GenAI integration and ensure alignment across all levels of the organization. Strong leadership is essential to inspire teams, promote collaboration, and drive accountability towards achieving strategic objectives.
- **Incremental Implementation and Scalability:** Start with incremental implementation steps, focusing on specific use cases or departments to demonstrate tangible value and build momentum. This phased approach allows for iterative improvements and scalability as organizations gain confidence and experience with GenAI technologies.
- **Ecosystem Collaboration and Innovation Hubs:** Promote collaboration with AI vendors, academic institutions, and industry partners to create innovation hubs for GenAI experimentation and co-creation. By tapping into external expertise and resources, organizations can accelerate learning, access cutting-edge technologies, and explore new business opportunities.
- **Talent Cultivation and Diversity:** Invest in talent cultivation programs to nurture a diverse workforce with the skills and expertise needed to use GenAI effectively. Emphasize continuous learning, diversity, and inclusion to promote a culture of innovation and creativity that drives GenAI adoption and success.



Real-world Insights

Explore how organizations are using GenAI to gain a competitive edge:

- **Retail Revolution:** E-commerce giants use GenAI-powered recommendation systems to deliver personalized product suggestions, improving customer engagement and boosting sales. By analyzing customer behaviour and preferences in real-time, retailers create tailored shopping experiences that lead to loyalty and revenue growth.
- **Healthcare Transformation:** Healthcare providers revolutionize patient care with GenAI-enabled predictive analytics, disease diagnosis, and personalized treatment plans. By using vast amounts of medical data, GenAI helps clinicians make more accurate diagnoses, optimize treatment strategies, and improve patient outcomes, ultimately improving both clinical and operational efficiency.
- **Financial Frontier:** Banks and financial institutions use GenAI for fraud detection, risk assessment, and algorithmic trading to safeguard assets and optimize investment decisions. By analyzing transaction patterns and market trends in real-time, GenAI empowers financial institutions to mitigate risks, identify opportunities, and deliver superior financial services to customers.
- **Manufacturing Mastery:** Manufacturers optimize operations with GenAI-driven predictive maintenance, supply chain optimization, and quality control. By analyzing sensor data and production metrics, GenAI enables proactive maintenance, streamlines logistics, and enhances product quality, driving efficiency and competitiveness in the manufacturing sector.



Future Trends and Innovations

Looking ahead, several trends and innovations are expected to shape the future of GenAI integration:

- **Transparent Intelligence:** The evolution of explainable AI models promises transparency, providing insights into AI decision-making processes. This improves trust, promotes accountability, and ensures compliance with regulatory standards, paving the way for more responsible and ethical AI adoption.
- **Creative AI Horizons:** Innovations in AI-powered creativity tools, including generative design and content generation, unlock new possibilities for human-AI collaboration in creative activities. These tools augment human creativity, streamline content creation processes, and fuel innovation across industries, leading to a new era of artistic expression and design innovation.
- **Dynamic Data Ecosystems:** The existence of data ecosystems and data marketplaces enables organizations to access and exchange diverse datasets for AI training and analysis. By using these dynamic data ecosystems, organizations can enhance the quality and diversity of their data inputs, improving the performance of AI models across various applications.



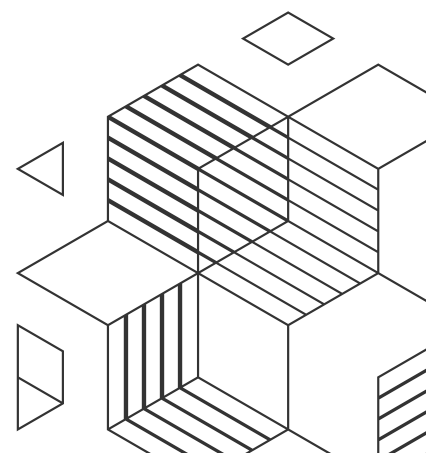
Conclusion

In conclusion, the integration of GenAI presents an opportunity for organizations to succeed in today's dynamic and data-centric environment. By mastering the foundational principles, overcoming challenges, and strategically using GenAI capabilities, businesses can unlock several possibilities for innovation, efficiency, and sustained growth.

However, realizing success in GenAI integration necessitates a comprehensive approach that includes technological expertise, ethical integrity, regulatory compliance, and organizational alignment.

As we move towards the integration of GenAI, it is important to integrate it with a steadfast commitment to responsibility, ethics, and excellence. By promoting a culture of continuous learning, collaboration, and ethical leadership, organizations can not only gain a competitive edge but also contribute to the advancement of AI for the betterment of society at large.

Let us embrace the transformative potential of GenAI with optimism and determination, ensuring that it serves as a motivation for positive change and sustainable progress. Through collective efforts and unwavering dedication, we can use the power of GenAI to shape a future that is not only technologically advanced but also ethically sound and socially inclusive.



GenAI Readiness Assessment

Our expert team at Crossml will perform a GenAI readiness assessment of your business. This helps to understand current maturity, potential use case and opportunities for AI enablement.



Disclaimer:

The information contained in this document represents the current view of CrossML on the issues discussed as of the date of publication. The names of actual companies and products mentioned herein may be the trademarks of their respective owners.